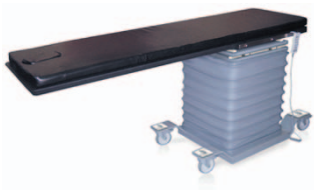


Technical Specifications

MAX5

Max Series 5 Move Surgical Table  
Supply Voltage: 120 VAC~ 5% ±  
Max Current : 7A  
Frequency: 60 Hz

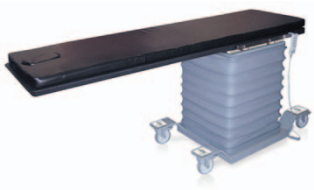
1. HEIGHT..... 32" TO 42"  
2. LATERAL TILT..... ( +/- ) 17°  
3. TRENDLENBERG..... ( +/- ) 20°  
4. LONGITUDINAL TRAVEL ..... 10" (+/- 5")  
5. LATERAL TRAVEL..... 10" (+/- 5")



MAX4

Max Series 4 Move Surgical Table  
Supply Voltage: 120 VAC~ 5% ±  
Max Current : 3.5A  
Frequency: 60 Hz

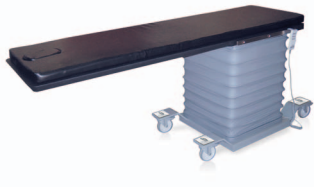
1. HEIGHT..... 29" TO 40"  
2. LATERAL TILT..... ( +/- ) 17°  
3. TRENDLENBERG..... ( +/- ) 20°  
4. LONGITUDINAL TRAVEL ..... 10" (+/- 5")



MAX3

Max Series 3 Move Surgical Table  
Supply Voltage: 120 VAC~ 5% ±  
Max Current : 3.5A  
Frequency: 60 Hz

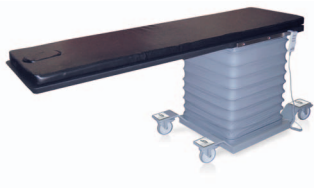
1. HEIGHT..... 28" TO 40"  
2. LATERAL TILT..... ( +/- ) 17°  
3. TRENDLENBERG..... ( +/- ) 20°



MAX2

Max Series 2 Move Surgical Table  
Supply Voltage: 120 VAC~ 5% ±  
Max Current : 3.5A  
Frequency: 60 Hz

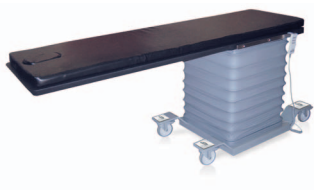
1. HEIGHT..... 28" TO 40"  
2. LATERAL TILT..... ( +/- ) 17°



MAX1

Max Series 1 Move Surgical Table  
Supply Voltage: 120 VAC~ 5% ±  
Max Current : 3.5A  
Frequency: 60 Hz

1. HEIGHT..... 28" TO 40"



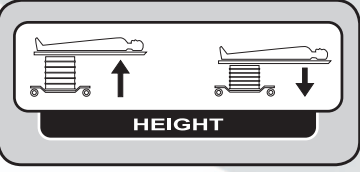
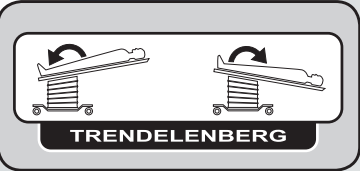
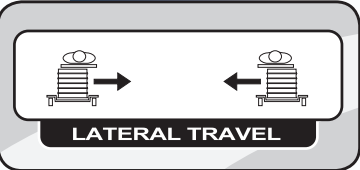
MAX0

Max Series Surgical Table  
1. FIXED HEIGHT ..... 36"

MAX

s e r i e s

MOVEMENTS



Radiolucent Imaging  
Tables for Pain Management

MAX0

MAX1

MAX2

MAX3

MAX4

MAX5



Compliance

Surgical Tables Incorporated (STI) manufactures medical devices that are compliant with the Center for Devices and Radiological Health (CDRH) Code of Federal Regulation 21 Subchapter J Part 1020 Section 30 (CFR21 Subchapter J part 1020.30), the performance standard for ionizing radiation emitting products. Additionally, STI's products are manufactured according to the Food & Drug Administrations (FDA) Current Good Manufacturing Practices (CGMP's).

FDA PRODUCT CLASSIFICATION  
Device Description: Radiologic Table  
Product Code: KXJ  
Regulation Number: 892.1980  
Device Class: 2  
GMP Exempt: No  
510(k) Exempt: Yes

MAX

s e r i e s





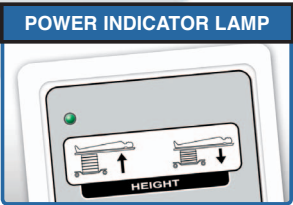
*Designed to support the latest advancements in surgical procedures and imaging techniques, setting the standard for operating efficiency, ergonomics and safety.*

### STI Features

- 24" wide carbon fiber top (84" length) comfortably fits larger patients and in most cases eliminates the need for arm boards
- Emergency Stop Switch for maximum Operating or Procedural safety (See Picture)
- MAX series allows simultaneous motions for quick patient positioning



- Power indicator lamp on handset lights green when the table is in motion. (See Picture)
- Easily transfer patients from stretcher or gurney. Standard stretcher or gurney table tops can be flush with the MAX series radiolucent top allowing for easy pre or post procedural transfer for incapacitated patients.
- Modern base design allows for maximum c-arm clearance. The MAX series tables have the most c-arm clearance in the market.
- Low boarding height for elderly or wheelchair bound patients.

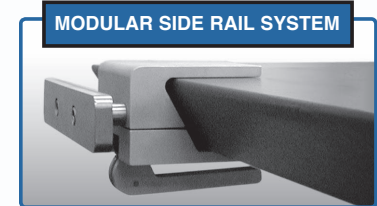


- Removable power cord for easy transport of imaging table (See Picture)
- Surgical Armboards incorporate 180 degrees of rotation which provides infinite arm positioning (See Picture)
- Advanced airway management system provides maximum access to the patient which adds to overall patient comfort



- Protective bellows provides safety by enclosing all motors, controls and wiring. The protective bellows are also easily cleaned with standard operating or procedural room sanitizers (See Picture)
- Rated for 500 pound patients
- The patient transfer bar is mounted to the removable side rail system and helps reduce "patient roll-over" when transferring a patient from a stretcher or gurney to the table (See Picture)
- 2" patient pad is made of soft and flexible material for patient comfort. The patient pad can be cleaned with standard operating or procedural room sanitizers. (See Picture)

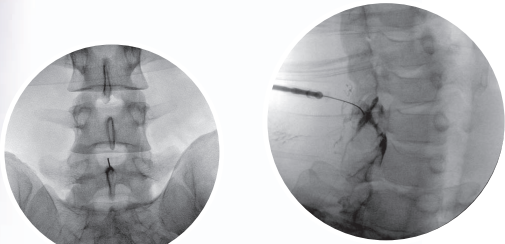
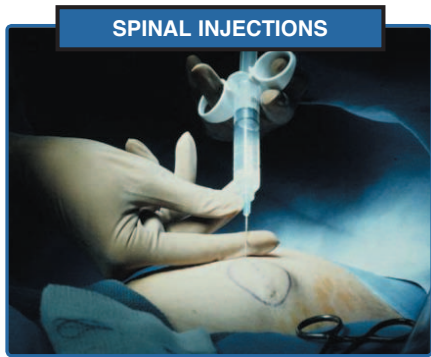
- 2" patient pad is made of durable vinyl which is puncture and stain resistant. Vinyl is easily cleaned with standard operating or procedural room sanitizers.
- MAX series imaging tables are very easy to move. A single nurse or staff person can easily rotate a MAX series imaging table when reversing the operating or procedural set-up
- 4 swivel locking castors have a rated capacity of 1760 pounds. (See Picture)



- Modular side rail system accepts all OR accessories and allows for maximum radiolucency while not sacrificing surgical or procedural possibilities. The Modular side rail system locks into grooves on table top for maximum stability. (See Picture)



- Optional power adjustable backrest for Breast Augmentation motion
- Optional wireless remote control. (See Picture)
- Uninterruptible Power Supply(UPS). See Picture)
- Optional foot controls. (See Picture)



### Versatility

*The MAX series Surgical Tables provide a flexible solution for the medical & budgetary concerns of all surgical environments.*

### Suggested Radiation Safety Products

